

## Transect n°4 (T4), Camp des gaulois

Site Natura 2000 :

"Ile de Groix"

Date du relevé:

14 09 05

Roche mère:

schistes

Orientation:

sud-sudouest

Opérateur:

FLC CR

Numéro de relevé	1	2	3	4	5	6	7	8
Distance (en m)	22	117,5	134,8	217,3	235,1	256,1	270,7	327,2
Substrat								
Hauteur moyenne (cm)	3	34	52	46	65	100	78	145
Espèce \ Recouvrement	99%	98%	100%	99%	100%	100%	100%	100%
Festuca rubra	■							
Daucus carota								
Lotus corniculatus								
Holcus lanatus								
Plantago coronopus								
Trifolium sp								
Rubus sp			■		■			■
plantago lanceolata								
Viola riviniana								
Armeria maritima								
Cerastium sp								
Leontodon taraxacoïdes								
Lonicera periclymenum								
Erica cinerea	■	■	■	■	■	■	■	■
Ulex europaeus	■	■	■	■	■	■	■	■
Erygium campestre								
Senecio jacobaea								
Dactylus glomerata								
Agrostis sp								
Rumex acetosa								
Prunus spinosa								
Erica vagans								
Sedum anglicum								
Hedera helix			■				■	■
Betonica officinalis								
Potentilla reptans								
Lichen sp								
Sarothamnus scoparius								
Cuscuta sp								
Jasione montana								
Graminées sp	■							
Scilla autumnalis								
Crataegus monogyna								
Cirsium sp								
Calluna vulgaris								
Hieracium pilocella								
Silene maritima								
Teucrium scorodonia								■
Thymus serpyllum								
Bryophytes								
Pteridium aquilinum					■			■
Centaurium erythraea								

Légende	
—	1
+	2
r	3
i	4
■	5

## Transect n°4 (T4), Camp des gaulois

Site Natura 2000 :

"Ile de Groix"

Date du relevé:

03/07/2006

Opérateur:

FLC CR

Roche mère:

schistes

Orientation:

sud-sudouest

Numéro de relevé	1	2	3	4	5	6	7	8
Distance (en m)	22	117,5	134,8	217,3	235,1	256,1	270,7	327,2
Substrat								
Hauteur moyenne (cm)	3	25	52	46	65	90	78	145
Espèce \ Recouvrement	99%	98%	100%	99%	100%	100%	100%	100%
Festuca rubra	■							
Daucus carota								
Lotus corniculatus								
Holcus lanatus								
Plantago coronopus	■							
Trifolium sp								
Rubus sp			■		■			■
plantago lanceolata								
Viola riviniana								
Armeria maritima								
Cerastium sp								
Leontodon taraxacoïdes								
Lonicera periclymenum								
Erica cinerea	■	■	■	■	■	■	■	■
Ulex europaeus	■	■	■	■	■	■	■	■
Eryngium campestre								
Senecio jacobaea								
Dactylus glomerata								
Agrostis sp	■							
Rumex acetosa								
Prunus spinosa								
Erica vagans								
Sedum anglicum								
Hedera helix			■					■
Betonica officinalis								
Potentilla reptans								
Lichen sp								
Sarothamnus scoparius								
Cuscuta epithymum								
Jasione montana								
Scilla autumnalis								
Crataegus monogyna								
Cirsium filipendulum								
Calluna vulgaris								
Hieracium pilocella								
Silene maritima								
Teucrium scorodonia								
Thymus serpyllum								
Bryophytes sp								
Pteridium aquilinum						■		■
Centaurium erythraea								
Anthoxantum aristatum								
Aira praecox								
Aira caryophyllea								
Vulpia bromoides								
Potentilla erecta								

Légende	
■	1
■	5
+	4
r	3
.....	i
.....	2

## Transect n°4 (T4), Camp des gaulois

Site Natura 2000 :

"Ile de Groix"

Date du relevé:

09/07/2007

Opérateur:

FLC CR

Roche mère:

schistes

Orientation:

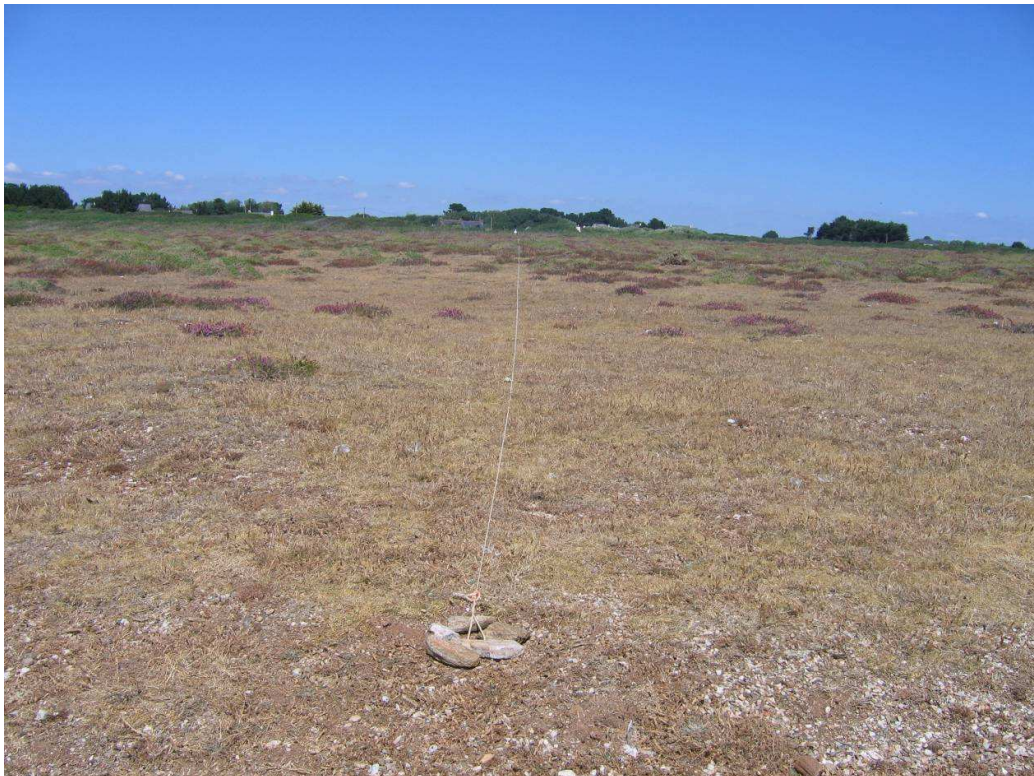
sud-sudouest

Numéro de relevé	1	2	3	4	5	6	7	8
Distance (en m)	22	117,5	134,8	217,3	235,1	256,1	270,7	327,2
Substrat								
Hauteur moyenne (cm)	3	25	52	46	65	90	78	145
Espèce \ Recouvrement	99%	98%	100%	99%	100%	100%	100%	100%
Festuca rubra	[Bar chart showing presence/absence]							
Daucus carota	[Bar chart showing presence/absence]							
Lotus corniculatus	[Bar chart showing presence/absence]							
Holcus lanatus	[Bar chart showing presence/absence]							
Plantago coronopus	[Bar chart showing presence/absence]							
Trifolium sp.	[Bar chart showing presence/absence]							
Rubus sp.	[Bar chart showing presence/absence]							
Plantago lanceolata	[Bar chart showing presence/absence]							
Viola riviniana	[Bar chart showing presence/absence]							
Armeria maritima	[Bar chart showing presence/absence]							
Cerastium sp.	[Bar chart showing presence/absence]							
Leontodon taraxacoïdes	[Bar chart showing presence/absence]							
Lonicera periclymenum	[Bar chart showing presence/absence]							
Erica cinerea	[Bar chart showing presence/absence]							
Ulex europaeus	[Bar chart showing presence/absence]							
Eryngium campestre	[Bar chart showing presence/absence]							
Senecio jacobaea	[Bar chart showing presence/absence]							
Dactylus glomerata	[Bar chart showing presence/absence]							
Agrostis sp.	[Bar chart showing presence/absence]							
Rumex acetosa	[Bar chart showing presence/absence]							
Prunus spinosa	[Bar chart showing presence/absence]							
Erica vagans	[Bar chart showing presence/absence]							
Sedum anglicum	[Bar chart showing presence/absence]							
Hedera helix	[Bar chart showing presence/absence]							
Stachys officinalis	[Bar chart showing presence/absence]							
Potentilla reptans	[Bar chart showing presence/absence]							
Lichen sp.	[Bar chart showing presence/absence]							
Cytisus scoparius	[Bar chart showing presence/absence]							
Cuscuta epithymum	[Bar chart showing presence/absence]							
Jasione montana	[Bar chart showing presence/absence]							
Scilla autumnalis	[Bar chart showing presence/absence]							
Crataegus monogyna	[Bar chart showing presence/absence]							
Cirsium filipendulum	[Bar chart showing presence/absence]							
Calluna vulgaris	[Bar chart showing presence/absence]							
Hieracium pilosella	[Bar chart showing presence/absence]							
Silene vulgaris subsp. maritima	[Bar chart showing presence/absence]							
Teucrium scorodonia	[Bar chart showing presence/absence]							
Thymus serpyllum	[Bar chart showing presence/absence]							
Bryophytes sp.	[Bar chart showing presence/absence]							
Pteridium aquilinum	[Bar chart showing presence/absence]							
Centaurium erythraea	[Bar chart showing presence/absence]							
Aira praecox	[Bar chart showing presence/absence]							
Aira caryophyllea	[Bar chart showing presence/absence]							
Vulpia bromoides	[Bar chart showing presence/absence]							
Potentilla erecta	[Bar chart showing presence/absence]							
Anthoxanthum aristatum	[Bar chart showing presence/absence]							
Bromus hordeaceus	[Bar chart showing presence/absence]							
Moenchia erecta	[Bar chart showing presence/absence]							

Légende	
[Solid line]	1
[Dashed line]	+
[Dotted line]	r
[Dash-dot line]	i
[Thick solid line]	5
[Medium solid line]	4
[Thin solid line]	3
[Dotted line]	2



Transect 2005



Transect 2006



Transect 2007